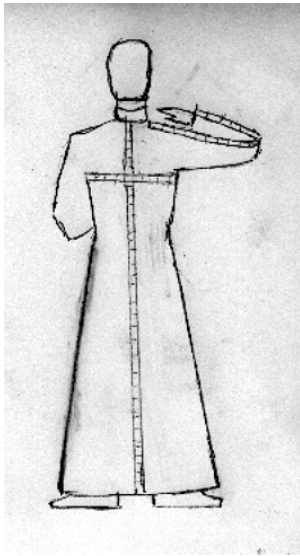


Roman Style Alb

Notes:

1. The alb should be made 1" longer than the back length of the cassock.
2. Make narrow french seams 1/4" to 3/8 " deep or finish seams by serging to 3/8" deep.



Standard Size Notes

<i>Height</i>	<i>Size</i>	<i>Back</i>	<i>Shirt Sleeve Length</i>	<i>Sleeve-Side Collar to wrist</i>	<i>Shoulder length</i>	<i>Neck band</i>
5'3"-5'5"	X-small	54"	(31")	28"		19"
5'6"-5'8"	Small	56"	(32")	29"		19"
5'9"-5'11"	Medium	58"	(33")	30"	6 3/4" +flat felled seam=7"	20"
6'0"-6'3"	Large	60"	(34")	31"		21"
over 6'3"	X-large	62"	(35")	32"-33"		21"-22"

Note: For a 5'10" to 6' priest about a 62" long alb measured from the shoulder is needed with a 23" to 24" sleeve length measured from shoulder to wrist. For a priest over 6' about a 64" long alb is needed with a 24" to 25" sleeve length.

Roman Al b

Materials:

About 5½yd of lightweight white cambric linen

Cutting directions:

Preshrink the linen (soak in very hot water) before cutting and press.

Cut 1 alb back & 1 alb front

Cut 2 sleeves & 2 cuffs

Cut 2 shoulder yokes

Cut 2 yoke bands & 2 yoke band facings

Directions:

1. Fold, press & baste pleats into the front & back alb pieces.
2. Fold shoulder yoke piece in half, wrong side together. Baste along sleeve seam..
3. Insert shoulder yoke between front yoke band & yoke facing and the back

yoke band & yoke facing matching notches, right sides together. Pin & stitch with ½" seam. Press seam toward yoke band.

4. Press seam allowance under on front & back yoke bands.

5. Pin the wrong side of front & back alb to the right side of yoke band facings. Stitch with a ½" seam. Press toward band facing.

6. Press under the seam allowance on yoke band. Pin and baste folded edge of yoke band to the front & back yoke. Topstitch in place.

7. Pin & stitch sleeve to the body of the alb with a french seam. or finish seam on a serger..

8. Pin & stitch side and underarm seam leaving a 9" opening in the side seam for access to pants pockets with a french seam or finish seam on a serger.

9. Press seam allowance under along upper edge of cuff. With wrong sides together, pin & stitch underarm seam with ½" seam. Press seam open. Check sleeve length and trim to correct length, if necessary. Pin & stitch right side of lower edge of cuff to wrong side of sleeve edge. Turn cuff to outside and pin. Topstitch in place

10. Hem lower edge of alb.

11. Neckline & sleeve. edge maybe finished with a very narrow cotton lace. An insert lace or banding works well with this style alb.